

# BEARING PROTECTION DEVICES FOR ELECTRIC MOTORS

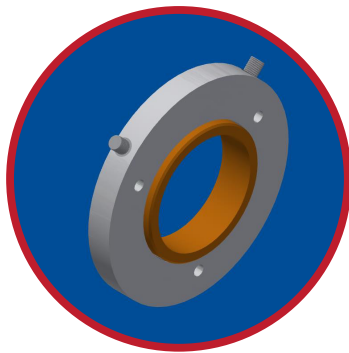
Orion Engineered Seals has developed a revolutionary, patented **IP66 Certified Bearing Protection Device** to keep your lubrication in and contaminants out.

When using a VFD in your motor application, our BPD can offer both contamination protection and grounding protection if necessary. We also offer our GB product for grounding protection if that is your only requirement.

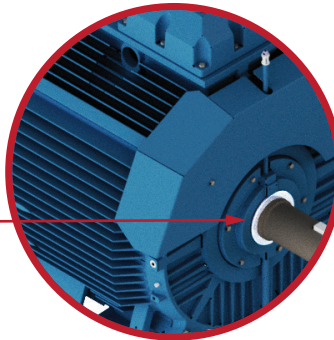


## ★ PROVEN BENEFITS

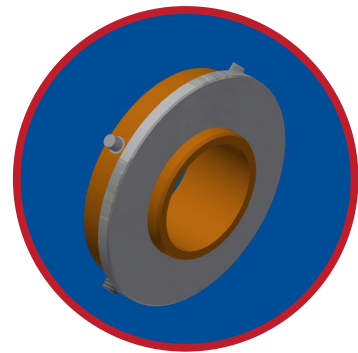
	BPD	BPD-GB	GB
Elimination of Stray Current		×	×
Works on All Shafts	×	×	×
Effectively Handles a Wide Range of Currents		×	×
No Horsepower Limitations	×	×	×
Preassembled and Engineered to Fit Any Shaft or Envelope Size	×	×	×
Available in Split or Solid Design	×	×	×
Independent Grounding Brush Available			×
Maximum Contaminant Protection	×	×	
Preserves Optimum Bearing Lubrication	×	×	
Compact Design	×	×	×
Maintenance Free	×	×	×
Longer Seal Life - Non-Contact Design Eliminates Wear	×	×	×
Extensive Dimensional Database	×	×	×
IP66 Certified	×	×	



GB: Grounding  
Brush Only



BPD: Bearing  
Protection Device



BPD-GB: Bearing Protection  
Device with Grounding Brush



## ★ DESIGN FEATURES

> **Two Vertical Internal Chambers** - The Orion BPD utilizes the laws of physics with the vertical alignment of the internal chambers to create the most effective and efficient bearing protection device on the market today.

> **Internal Static Elastomers** – BPD is the only true non-contacting device with two internal static elastomers, eliminating the potential of dynamic o-ring hang up.

> **Contaminant Exclusion** – With double exclusion chambers, the Orion BPD can exclude higher volumes of contaminant ensuring longer bearing life.

> **Angled Oil Return** – With an angled oil return, the Orion BPD offers enhanced return flow and higher volume capacity with no oil leakage.

> **Angled Interface** - While competing products offer a straight interface, the Orion BPD features an angled interface, giving the contaminant direction and flow to expel more efficiently.

## ★ APPLICATION CHARACTERISTICS

CHARACTERISTICS	PERFORMANCE
Grease Lubrication	Excellent
Oil Lubrication	Excellent
Low or High Speed	Excellent
Friction Torque	Equal to Bearing Rating
PROTECTION	
Dust	Excellent
Large Particles	Excellent
Water	Excellent
High or Low Temperature	Excellent



> To find out more about advanced, maximum protection for your electric motor bearings, contact us at **513.765.8100** or visit **[www.orionseals.com](http://www.orionseals.com)**.

## ★ OPERATING CONDITIONS

- > Dust and water exposure
- > Low and high speeds
- > Low and high temperature
- > Shaft movement

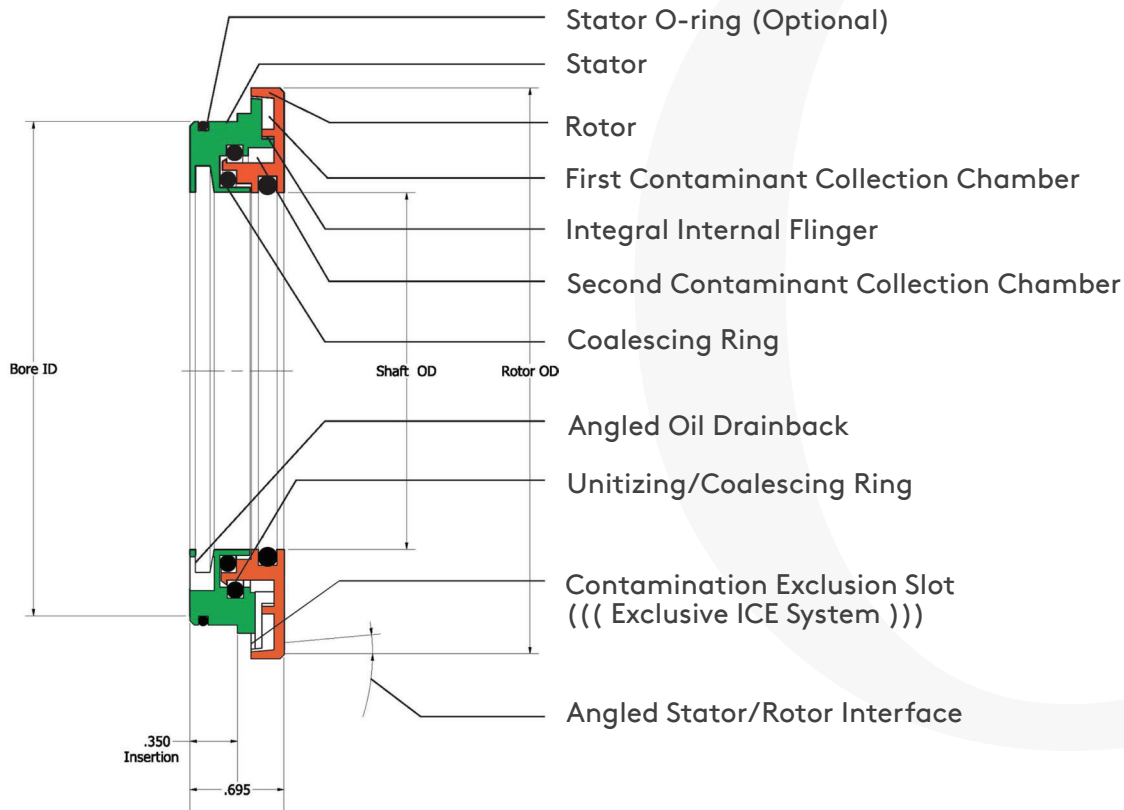
## ★ APPLICATIONS

- > Wherever electric motors are used:



> ALSO AVAILABLE: USER-FRIENDLY SPLIT DESIGN TECHNOLOGY

## ★ DESIGN FEATURES



### STANDARD MATERIALS

- > Stainless Rotor
- > Bronze Stator
- > Viton® Elastomers
- > All Other Material Combinations Available